

Getting Help in a Medical Emergency

Know Your Resources. Know What to Do.



THE PURPOSE OF THIS PRESENTATION IS TO:

- UNDERSTAND HOW TO ACCESS SCHOOL RESOURCES IN A MEDICAL EMERGENCY.
- IDENTIFY LOCATIONS OF AED'S (AUTOMATIC EXTERNAL DEFIBRILLATORS).
- LEARN HOW TO ASSIST SOMEONE WITH A LIFE THREATENING ALLERGIC REACTION.

NEW STATE LAWS REQUIRE THE PLACEMENT OF AED'S IN VARIOUS LOCATIONS AND EPIPEN TRAINING FOR STAFF.

Your School Resources



Health Services

- Emergency Access to Nurse. Will not go to voicemail.
- Winnetka: x2900
- Northfield: x3000

Athletic Trainer

- Available in afternoon through after school athletics.
- X2299
- Radio Channel 3

Security

- Carry radios: W-Channel 2 NF Channel 5
- Able to reach nurse and police officer to assist you.
- Will assist in guiding paramedics to scene.

If you decide to call 911



From school phone: Dial 911. The nurse will get an automatic message that a 911 call has been made and will come to assist you. If location of emergency is different from calling location, call nurse to assist you

From your cell phone on campus: After you call 911, call nurse or send student helper in to bring nurse to the area.

From your cell phone off campus: Call Health Services when you can to assist with follow-up and incident report.

The Athletic Trainer is available in the afternoons and after school and will assist you in an emergency situation.

AED's

Automatic External Defibrillators



Available at school and field locations for cardiac emergencies.



Familiarize yourself with how to access an AED out of wall cabinet.



Become aware of hallway and field signs indicating where AED's are located.

Where are the AED's? Can you locate them?

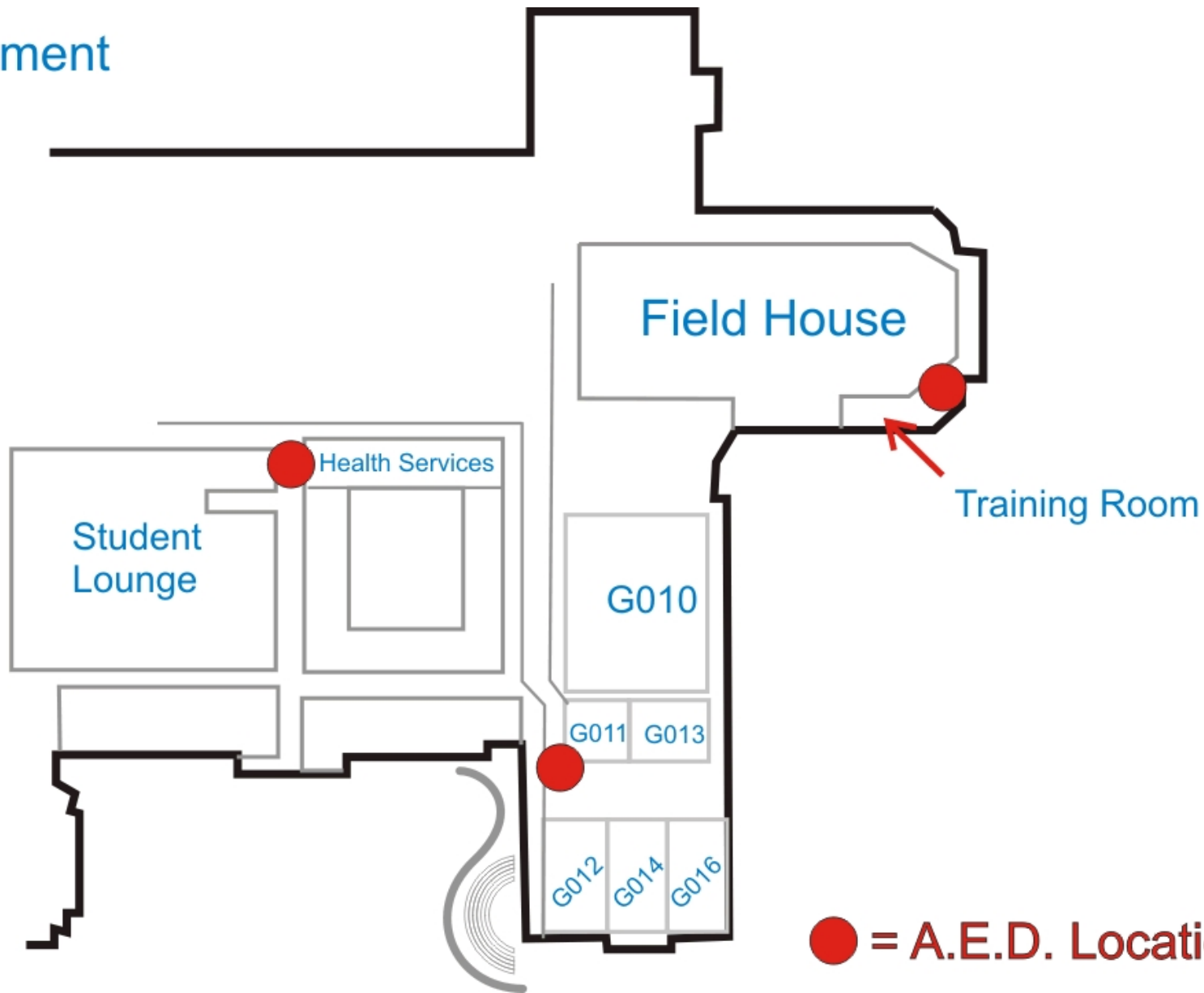


It's important to have AED's in a school community. It is equally important that we know where they are located in case of emergency.

Review the maps to:

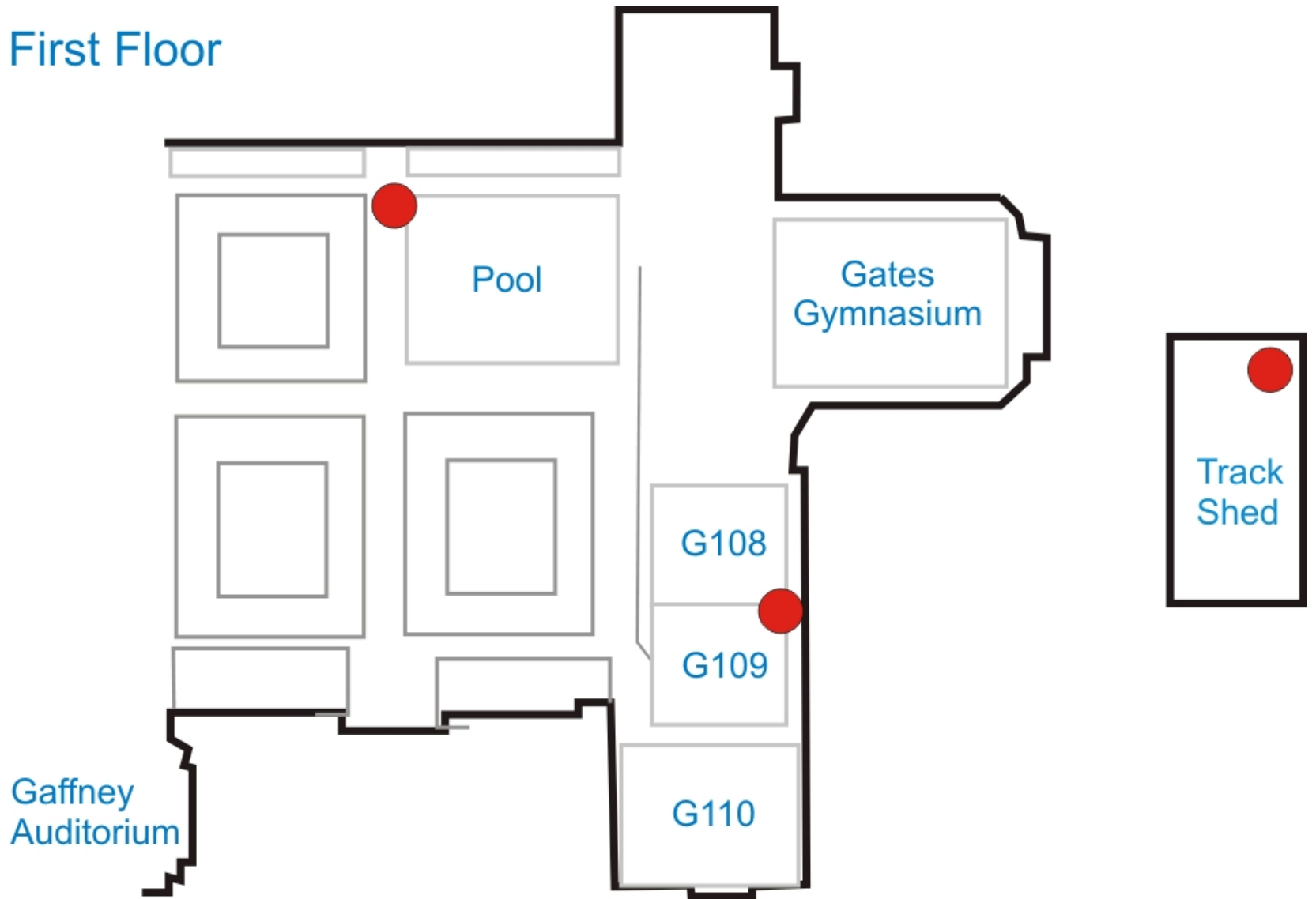
- Identify the AED's that are closest to your work and coaching areas.
- Guide you to an AED location if needed in an emergency.

Basement



● = A.E.D. Location

First Floor



Gaffney Auditorium

Pool

Gates Gymnasium

Track Shed

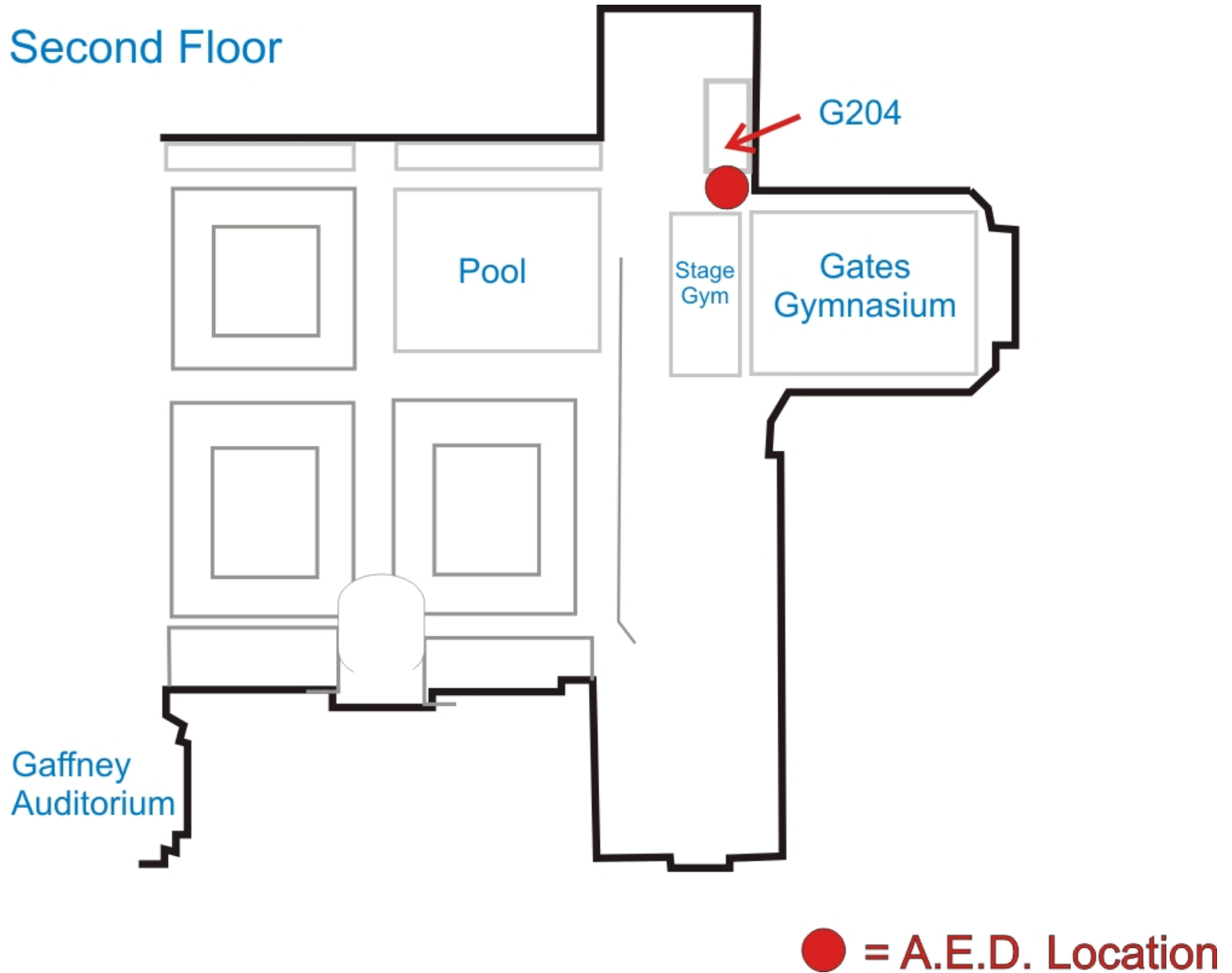
G108

G109

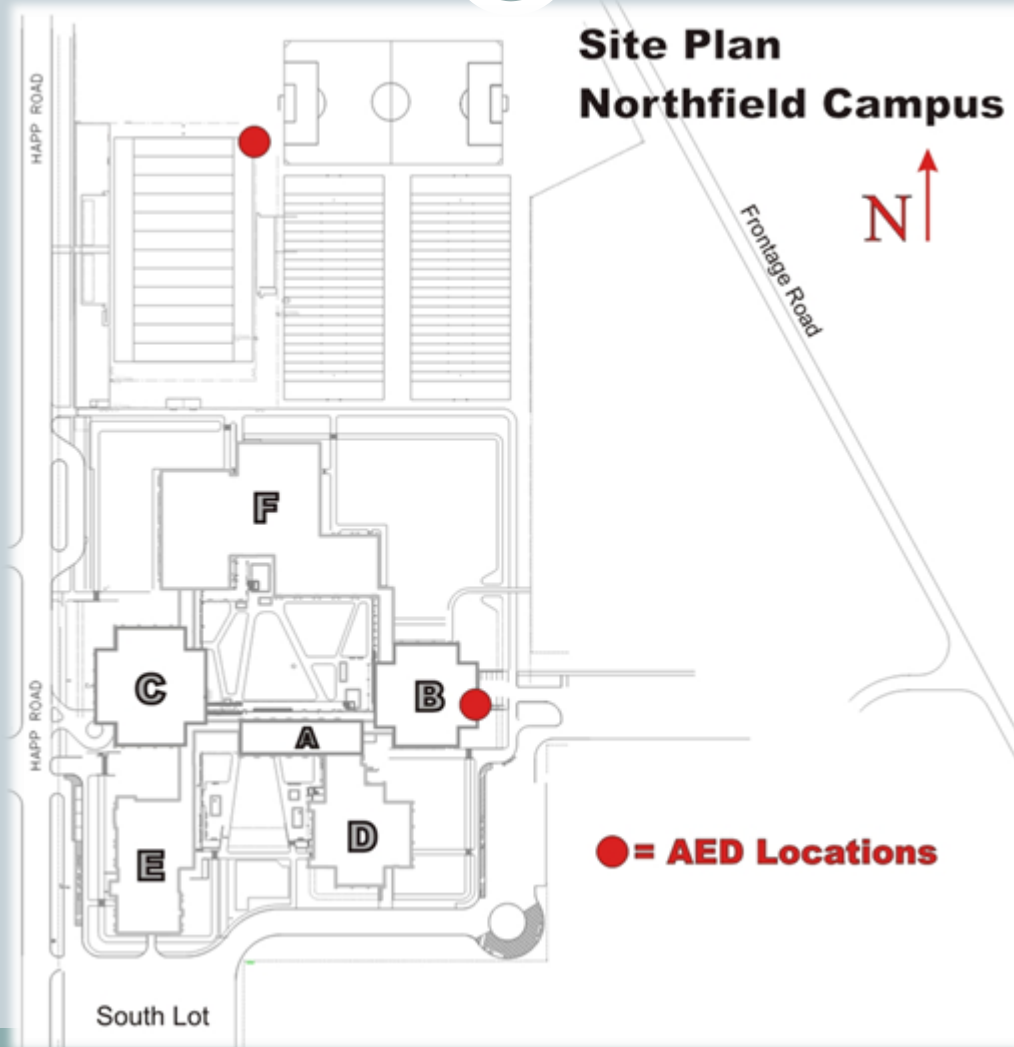
G110

● = A.E.D. Location

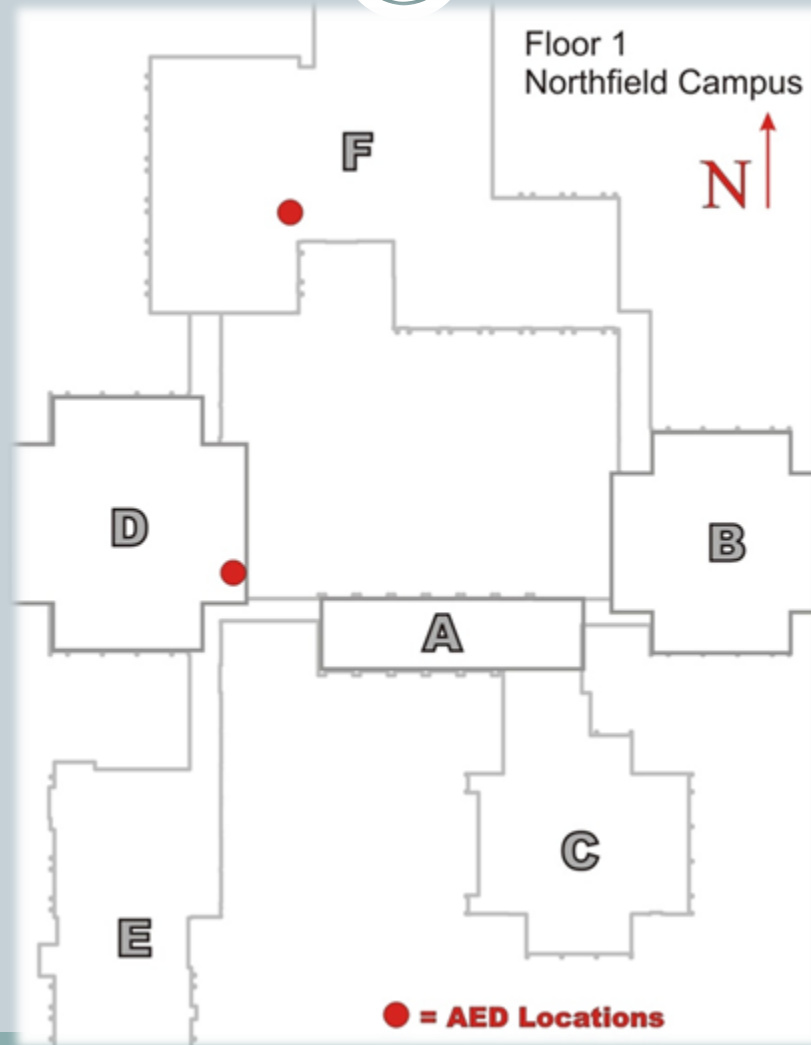
Second Floor



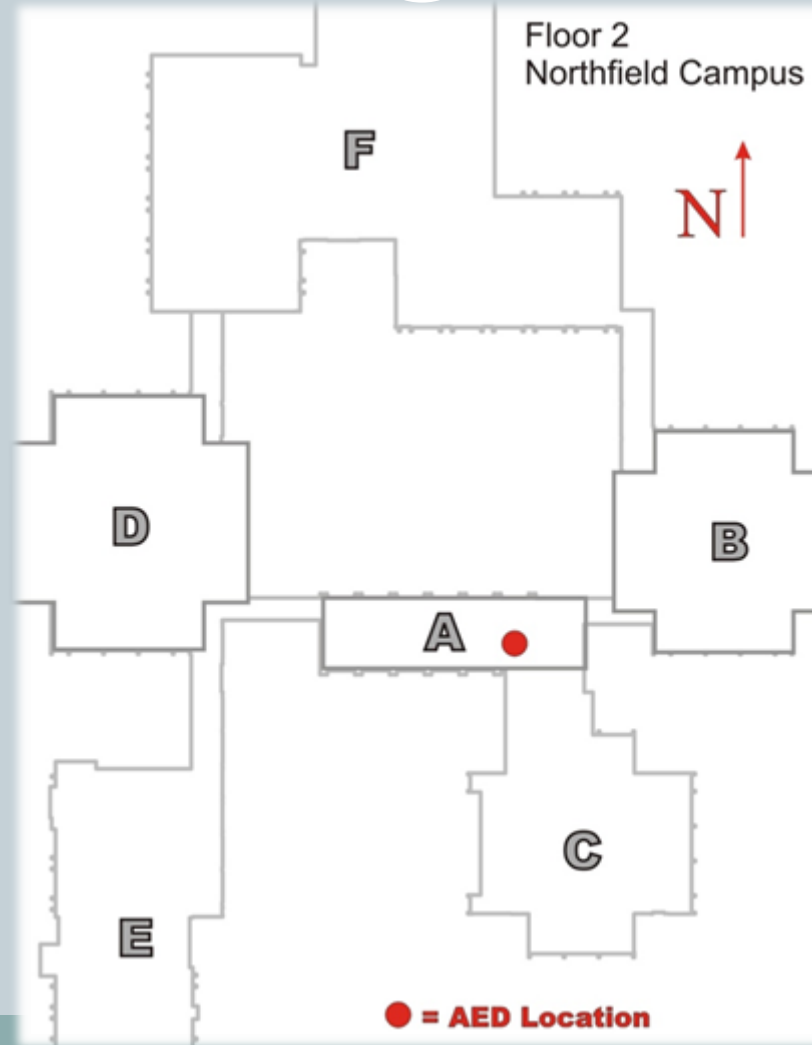
Northfield AED Map



Northfield AED Map



Northfield AED Map



List of AED Locations



Winnetka:

- Outside Health Services Room 029
- Outside Staff Wellness Room G204
- N17 doors/M Stairwell Across from Room 153
- Training Room G002
- Wrestling and Dance Rooms Outside G011
- Shed East Field On wall as you enter
- Duke Childs Field Clubhouse locker room
- Fox Meadows Field Equipment shed above slop sink

Northfield:

- Building D Outside D119
- Building F Outside F107
- Building A Near A210
- Northeast corner of Stadium Bolted to fence
- Loading dock at Building B

When an AED is Needed



- If you need to grab an AED, simply open the AED cabinet and take the AED out. A loud theft alarm may sound. Continue to take the AED to the scene where it may be needed. Other staff will disengage the alarm.
- Double-click on the following link for a demonstration:

[AED Demo](#)

EpiPen

Epinephrine for Severe Allergic Reactions



You may need to assist someone having a severe allergic reaction.

Allergies can be from food, stings, unknown origin.

If EpiPen is administered, **always** call 911.

Demonstration of how to use EpiPen will show on the next slide.

EpiPen Demonstration



- Please double-click on the following link to see Dale Grooms, Head Athletic Trainer, demonstrate self-administration of an EpiPen.

[EpiPen Demo](#)

- You can also contact Health Services and a nurse will provide hands-on training and address your questions and concerns.

Resources



- **AED's-link to cardiac science.**

http://www.cardiacscience.com/resources/videos-product-demos/product_demos.htm

Click on video AED G3plus automatic.

- **Epipen-epipen.com**

<http://epipen.com/page/how-to-use-epipen-auto-injector-index>

- **CPR Classes offered through New Trier Professional Development.**
- **CPR Classes offered by New Trier Athletic Trainers.**
 - **Contact Dale Grooms, x2299.**
- **Contact Health Services or the Athletic Trainers with questions or for AED and EpiPen demonstrations.**