

# New Trier Ladder to Reopening and Associated Metrics - DRAFT

## Background

As part of our Ladder to Reopening, New Trier has metrics that will guide our decisions of what step we can operate on in a safe manner for students, staff, and the community. The structure of the metrics are important to understand and are described below:

- 1) **Catchment Areas** - New Trier has defined four catchment areas that are designed to provide different levels of information for decision making. A catchment area is a geographic area of analysis relevant to the problem being analyzed.
  - a) Township Zip Codes - This area is defined by four Zip Codes: 60022, 60043, 60091, and 60093. While not covering our entire school community, it covers a 2010 census population of 57,256 and represents 94% of our families. This area provides the best local data for the spread and prevalence of COVID-19.
  - b) New Trier Staff Region - This area is defined by the Zip Codes in which our 712 staff members live, not including 5 employees who live out of state. This area provides us information on the prevalence and spread of the virus in the areas our staff live in order to better understand the risk of our staff members coming into school. For the time being these data are unweighted, meaning the number of employees in a Zip Code is not taken into consideration.
  - c) Suburban Cook County (and Lake County and Chicago)- This area is defined by IDPH and is the level at which they report their data. At this time it is the lowest level that is feasible for them to produce while capturing the idea that the state of the spread and prevalence of the virus in a community is impacted by neighboring communities. We are subject to IDPH mandates based on these data.
  - d) Region 10 - This area is defined by IDPH for tracking the outbreak and instituting mitigation measures in a more localized way than the entire state. We are subject to IDPH mandates based on these data.
  
- 2) **New cases per 100,000 people** - A metric that has been endorsed by many organizations and health departments across the country is new cases per 100,000 people. In using a ratio, it allows the status of the prevalence of new cases to be compared across different size regions. IDPH and ISBE has adopted this metric within their “Adaptive Pause” documents with the following county level thresholds:
  - a) Between 0 and 50 weekly cases per 100,000 = Minimal Community Transmission in the county
  - b) Between 50 and 100 weekly cases per 100,000 = Moderate Community Transmission in the county
  - c) Over 100 cases per week per 100,000 = Significant Community Transmission in the county

The Harvard Global Health Institute uses these thresholds in describing COVID risk levels as seen on their [interactive map](#):

| Covid Risk Level | Case Incidence  |                                    |
|------------------|-----------------|------------------------------------|
| <b>Red</b>       | <b>&gt;25</b>   | daily new cases per 100,000 people |
| <b>Orange</b>    | <b>10&lt;25</b> | daily new cases per 100,000 people |
| <b>Yellow</b>    | <b>1&lt;10</b>  | daily new cases per 100,000 people |
| <b>Green</b>     | <b>&lt;1</b>    | daily new case per 100,000 people  |

- 3) **Positivity Rate** - Positivity Rate for a catchment area indicates the number of positive test results compared to the number of tests administered. To use this ratio as a measure of prevalence in a catchment area, it is important to understand both the numerator, number of positive tests, and the denominator, number of tests administered. A high rate can indicate one or both of a high number of positives or a low number of tests across the catchment area. Please refer to this [Johns Hopkins article](#) for more information. As the number of tests in an area increases to a large number in proportion to the population, it is necessary to use positivity rate in conjunction with the New Cases per 100,000 metric because positivity rates may be low while incidence of COVID-19 may still be at unacceptable levels if testing is widespread.

IDPH has used these thresholds as part of their “Adaptive Pause” guidance.

- a) Between 0 and 5% positivity = Minimal Community Transmission in the county
  - b) Between 5% and 8% positivity = Moderate Community Transmission in the county
  - c) Greater than 8% positivity = Significant Community Transmission in the county
- 4) **School COVID Data** - The metrics will include reports of the number of positive COVID cases and quarantined students and staff regardless of the reason for quarantining.
- 5) **Operational Metrics** - Each campus will track the operational metrics at each step of the ladder. These metrics include monitoring PPE supplies, facility adaptations, restroom usage, hallway and stairwell logistics, and lunch time behaviors. We will also monitor our staffing levels and contact tracing capacity as both are essential to our ability to safely operate the school on Step 3 and above.

## Appendix I: New Trier's Proposed Metrics and Threshold Chart

| Step   | New Cases/100K Twp Zip Codes    | New Cases/100K NT Staff Region (unweighted) | Positivity Rate Twp Zip Codes | Positivity Rate NT Staff Region (unweighted) | Operational Metrics <sup>1</sup>           |
|--|---------------------------------|---|-------------------------------|--|--|
| <b>Current Metrics<sup>2</sup></b>   |                                 |   |                               |  |  |
| Metrics as of week ending <b>9/2/2020</b>  | 7.5 daily<br>52.5 weekly        | 11.2 daily<br>78.4 weekly                   | 3.1%                          | 4.7%   | Operational metrics ready to go for Step 3 |
| <b>Thresholds</b>  |                                 |   |                               |  |  |
| <b>1 &amp; 2 – Remote -</b><br>Essential staff in school; teachers situation dependent           | <i>DRAFT Under Review</i>       |   |                               |  |  |
| <b>3 – Cohorts -</b><br><i>Specialized Populations in designated areas</i>                       | <i>DRAFT Under Review</i>       |   |                               |  |  |
| <b>4 – 25% Hybrid</b><br>25% of students following their schedules (approx. 6-7 per classroom)   | <i>DRAFT Under Review</i>       |   |                               |  |  |
| <b>5 – 50% Hybrid</b><br>50% of students following their schedules (approx. 12-14 per classroom) | <i>DRAFT Under Review</i>       |   |                               |  |  |
| <b>6 – All In-school</b>   | <b>Restore Illinois Phase 5</b> |   |                               |  |  |

Data: <https://www.dph.illinois.gov/covid19/covid19-statistics>, Zip Code Data

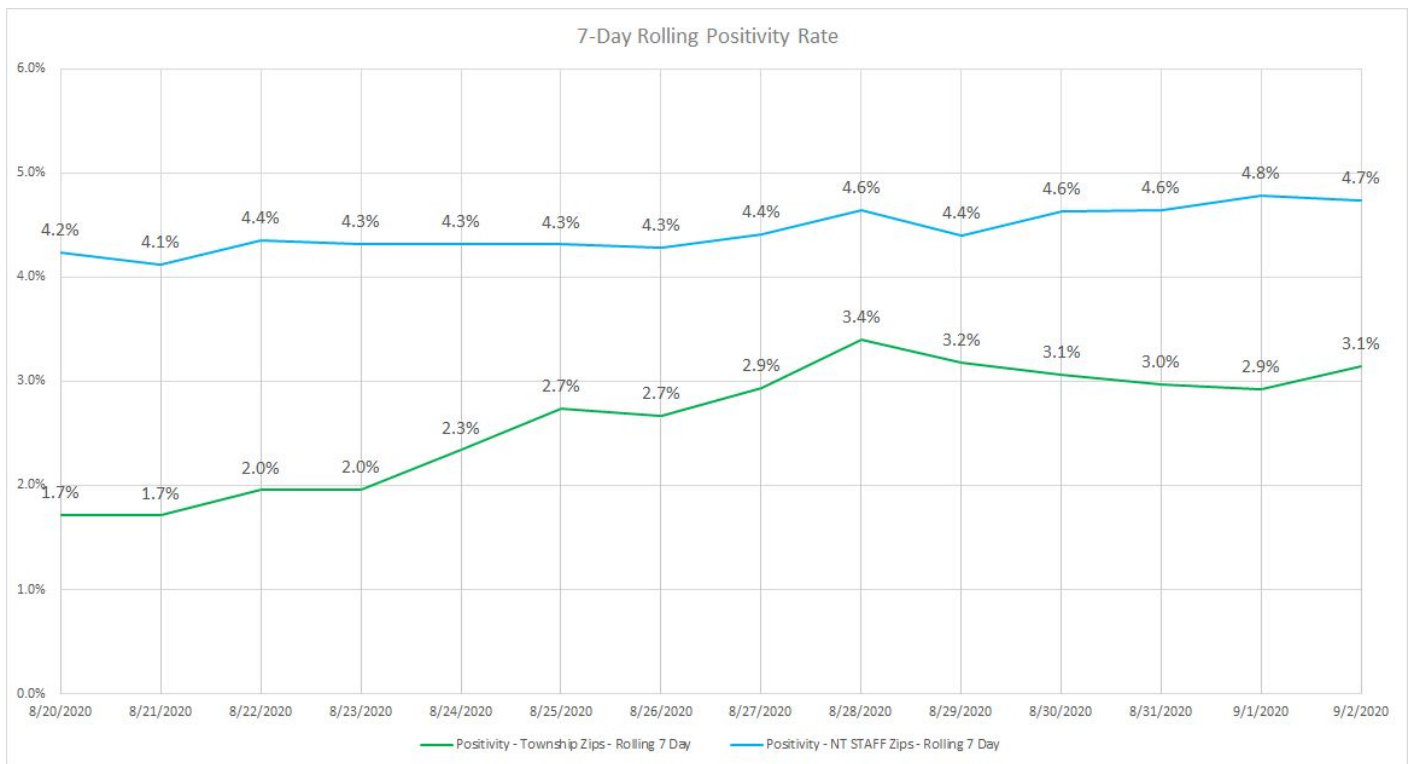
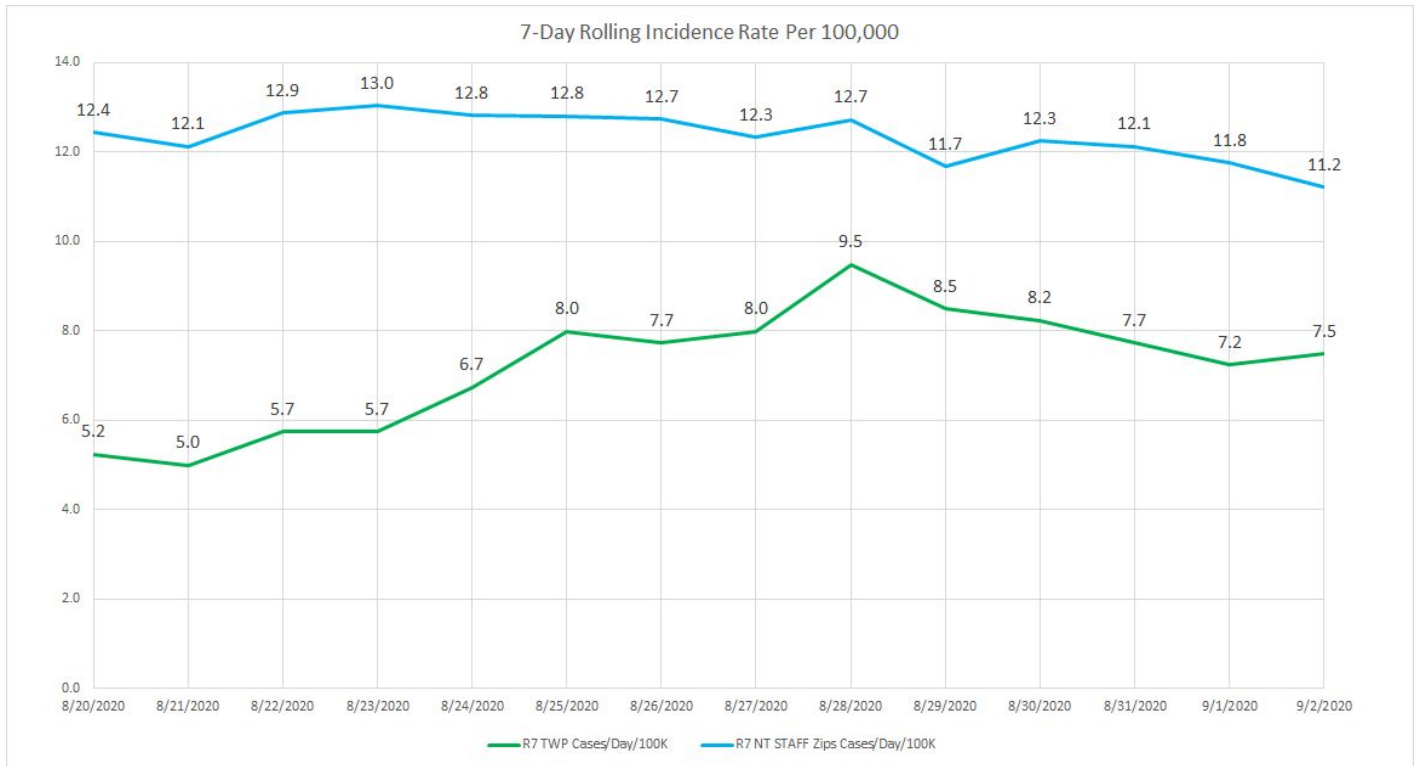
<sup>1</sup> Operational metrics defined and monitored separately

<sup>2</sup> All metrics are rolling 7-Day averages

## Appendix II: Operational Metrics

| Step                                | PPE Stock                                    | ESP Staffing                                    | Faculty Staffing                                | Facilities Staffing                             | Facility Adaptations                                     | Compliance with Guidelines                                  | Adequate Capacity in Common Spaces (Lunch, Bathroom, Hallways, Stairwells) |
|-------------------------------------|--|---|---|---|--|---|--|
| <b>Current Metrics</b>              |  |   |   |   |  |   |  |
| Metrics as of week ending 8/31/2020 |  |   |   |   |  |   |  |
| <b>Thresholds</b>                   |  |   |   |   |  |   |  |
| <b>1 &amp; 2 – Remote</b>           | <i>Inadequate stock</i>                      | <i>Inadequate staffing</i>                      | <i>Inadequate staffing</i>                      | <i>Inadequate staffing</i>                      | <i>Facilities adaptations incomplete</i>                 | <i>Students and staff are not complying with guidelines</i> | <i>Spaces do not adequately support any students or staff</i>              |
| <b>3 – Cohorts</b>                  | <i>Adequate stock for 10-25% of students</i> | <i>Adequate staffing for 10-25% of students</i> | <i>Adequate staffing for 10-25% of students</i> | <i>Adequate staffing for 10-25% of students</i> | <i>Facilities adaptations support 10-25% of students</i> | <i>Students and staff are complying with guidelines</i>     | <i>Spaces adequately support 10-25% of students</i>                        |
| <b>4 – 25% Hybrid</b>               | <i>Adequate stock for 25% of students</i>    | <i>Adequate staffing for 25% of students</i>    | <i>Adequate staffing for 25% of students</i>    | <i>Adequate staffing for 25% of students</i>    | <i>Facilities adaptations support 25% of students</i>    | <i>Students and staff are complying with guidelines</i>     | <i>Spaces adequately support 25% of students</i>                           |
| <b>5 – 50% Hybrid</b>               | <i>Adequate stock for 50% of students</i>    | <i>Adequate staffing for 50% of students</i>    | <i>Adequate staffing for 50% of students</i>    | <i>Adequate staffing for 50% of students</i>    | <i>Facilities adaptations support 50% of students</i>    | <i>Students and staff are complying with guidelines</i>     | <i>Spaces adequately support 50% of students</i>                           |
| <b>6 – All In-school</b>            | <b>Restore Illinois Phase 5</b>              |   |   |   |  |   |  |

### Appendix III: Rolling 7-Day Positivity Rate and New Cases Per 100,000 for Township and New Trier Staff Region



**Appendix IV: New Trier High School Active COVID Cases and Quarantine Numbers**

| New Trier District 203 - COVID-19 Case Summary - Week of 8/31 |       |             |  |                              |       |             |
|---|-------|-------------|--|------------------------------|-------|-------------|
| COVID-19 Tracking - Northfield                                |       |             |  | COVID-19 Tracking - Winnetka |       |             |
| Group   | Cases | Quarantined |  | Group                        | Cases | Quarantined |
| Students  |       | 2           |  | Students                     |       | 8           |
| Faculty   |       |             |  | Faculty                      |       | 2           |
| Staff   | 1     | 2           |  | Staff                        |       |             |
| Admin   |       |             |  | Admin                        |       |             |
| <b>Total</b>  | 1     | 4           |  | <b>Total</b>                 | 0     | 10          |

*Based on cases reported to the District and/or provided to the District by the Cook County Department of Public Health  
Includes quarantine for any reason, including exposure to someone who is positive, travel to an area with high incidence, etc*

**Appendix V: IDPH County and Regional Level Metrics**

| <b>County/School Level Metrics – Cook/Lake/Chicago (week ending 8/22/2020)</b><br><b>Must abide by ISBE and IDPH guidance based on County/School Metrics</b><br><b>Three Categories - Substantial, Moderate, and Minimal Community Transmission in County</b><br><b>No Current Restrictions</b> |                        |                   |                         |                 |
|---|------------------------|-------------------|-------------------------|-----------------|
|   | New Case Rate per 100K | New Case Increase | New Youth Case Increase | Test Positivity |
| Suburban Cook   | Substantial            | Minimal           | Minimal                 | Moderate        |
| Chicago   | Moderate               | Minimal           | Minimal                 | Moderate        |
| Lake  | Moderate               | Minimal           | Minimal                 | Moderate        |

Data: <https://www.dph.illinois.gov/countyschool?county=Cook>

| <b>Region Level Metrics – Region 10 (week ending 8/28/2020)</b><br><b>Must abide by ISBE and IDPH guidance based on Region Metrics</b><br><b>Two Categories - Target and Warning</b><br><b>No Current Restrictions</b> |                 |                            |   |   |                          |
|--|-----------------|----------------------------|---|---|--------------------------|
| Region   | Test Positivity | Increasing Test Positivity | Increasing Hospital Admissions for COVID-Like Illness | Medical/Surgical Beds – Percent Available | ICU Percent Availability |
| 10   | Target          | Target                     | Target  | Target                                    | Target                   |

Data: <https://www.dph.illinois.gov/regionmetrics?regionID=10>

## **Appendix VI: Sources Regarding Thresholds New Cases/100K and Positivity Rate**

IDPH Adaptive Pause

<https://www.isbe.net/Documents/IDPH-Adaptive-Pause-Metrics.pdf>

Lake County

<https://www.lakecountyil.gov/DocumentCenter/View/36182/Northern-Illinois-Return-To-School-Metrics---NIPHC>

DuPage County

<https://www.dupagehealth.org/DocumentCenter/View/3541/COVID-19-Return-to-School-Framework-8-28?bidId=>

Harvard Risk Level Model

[https://globalepidemics.org/wp-content/uploads/2020/07/pandemic\\_resilient\\_schools\\_briefing\\_72020.pdf](https://globalepidemics.org/wp-content/uploads/2020/07/pandemic_resilient_schools_briefing_72020.pdf)

District 214

[https://www.d214.org/assets/1/6/D214\\_Return\\_to\\_School\\_Metrics-0820.pdf](https://www.d214.org/assets/1/6/D214_Return_to_School_Metrics-0820.pdf)

Johns Hopkins - COVID 19 - Understanding "Percent Positive"

<https://www.jhsph.edu/covid-19/articles/covid-19-testing-understanding-the-percent-positive.html#:~:text=The%20percent%20positive%20is%20a,with%20levels%20of%20disease%20transmission.>



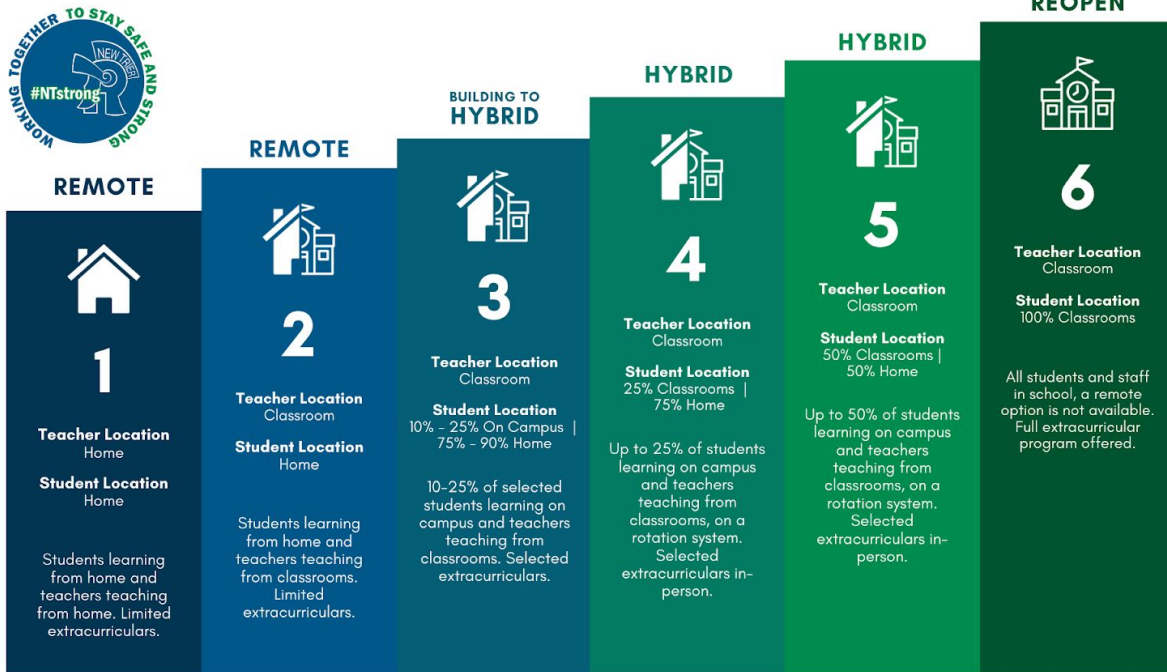
## Appendix VII - New Trier Zip Code List

| Zip   | City              | Population | COUNTY  | NT STAFF | # STAFF | Zip   | City        | Population | COUNTY | NT STAFF | # STAFF |
|-------|-------------------|------------|---------|----------|---------|-------|-------------|------------|--------|----------|---------|
| 60002 | Antioch           | 24299      | LAKE    | NT STAFF | 2       | 60131 | Franklin Pa | 18097      | COOK   | ---      | ---     |
| 60004 | Arlington Heights | 50582      | COOK    | NT STAFF | 23      | 60133 | Hanover P   | 38103      | COOK   | ---      | ---     |
| 60005 | Arlington Heights | 29308      | COOK    | NT STAFF | 2       | 60134 | Geneva      | 28565      | KANE   | NT STAFF | 1       |
| 60007 | Elk Grove Village | 33820      | COOK    | NT STAFF | 1       | 60137 | Glen Ellyn  | 37805      | DUPAGE | NT STAFF | 2       |
| 60008 | Rolling Meadows   | 22717      | COOK    | NT STAFF | 2       | 60141 | Hines       | 224        | COOK   | ---      | ---     |
| 60010 | Barrington        | 44095      | COOK    | NT STAFF | 4       | 60153 | Maywood     | 24106      | COOK   | ---      | ---     |
| 60013 | Cary              | 26872      | MCHENRY | NT STAFF | 3       | 60154 | Westchest   | 16773      | COOK   | ---      | ---     |
| 60014 | Crystal Lake      | 48550      | MCHENRY | NT STAFF | 1       | 60155 | Broadview   | 7927       | COOK   | ---      | ---     |
| 60015 | Deerfield         | 26800      | LAKE    | NT STAFF | 16      | 60160 | Melrose P   | 25432      | COOK   | ---      | ---     |
| 60016 | Des Plaines       | 59690      | COOK    | NT STAFF | 11      | 60162 | Hillside    | 8111       | COOK   | ---      | ---     |
| 60018 | Des Plaines       | 30099      | COOK    | NT STAFF | 2       | 60163 | Berkeley    | 5209       | COOK   | NT STAFF | 1       |
| 60022 | Glencoe           | 8153       | COOK    | TWP      | 12      | 60164 | Melrose P   | 22048      | COOK   | ---      | ---     |
| 60025 | Glenview          | 39105      | COOK    | NT STAFF | 40      | 60165 | Stone Park  | 4946       | COOK   | ---      | ---     |
| 60026 | Glenview          | 13335      | COOK    | NT STAFF | 12      | 60169 | Hoffman E   | 33847      | COOK   | ---      | ---     |
| 60029 | Golf              | 482        | COOK    | ---      | ---     | 60171 | River Grov  | 10246      | COOK   | NT STAFF | 1       |
| 60030 | Grayslake         | 36056      | LAKE    | NT STAFF | 1       | 60172 | Roselle     | 24537      | DUPAGE | NT STAFF | 3       |
| 60031 | Gurnee            | 37947      | LAKE    | NT STAFF | 6       | 60173 | Schaumbu    | 12217      | COOK   | NT STAFF | 2       |
| 60035 | Highland Park     | 29763      | LAKE    | NT STAFF | 25      | 60176 | Schiller Pa | 11795      | COOK   | ---      | ---     |
| 60040 | Highwood          | 5431       | LAKE    | NT STAFF | 4       | 60181 | Villa Park  | 28836      | DUPAGE | NT STAFF | 1       |
| 60042 | Island Lake       | 8547       | LAKE    | NT STAFF | 1       | 60192 | Hoffman E   | 16343      | COOK   | ---      | ---     |
| 60043 | Kenilworth        | 2513       | COOK    | TWP      | 1       | 60193 | Schaumbu    | 39188      | COOK   | ---      | ---     |
| 60044 | Lake Bluff        | 9792       | LAKE    | NT STAFF | 4       | 60194 | Schaumbu    | 19777      | COOK   | NT STAFF | 2       |
| 60045 | Lake Forest       | 20925      | LAKE    | NT STAFF | 2       | 60195 | Schaumbu    | 4769       | COOK   | ---      | ---     |
| 60046 | Lake Forest       | 35286      | LAKE    | NT STAFF | 5       | 60201 | Evanston    | 43125      | COOK   | NT STAFF | 38      |
| 60047 | Lake Villa        | 41669      | LAKE    | NT STAFF | 4       | 60202 | Evanston    | 31361      | COOK   | NT STAFF | 41      |
| 60048 | Libertyville      | 29095      | LAKE    | NT STAFF | 6       | 60203 | Evanston    | 4523       | COOK   | NT STAFF | 5       |
| 60053 | Morton Grove      | 23260      | COOK    | NT STAFF | 10      | 60301 | Oak Park    | 2539       | COOK   | ---      | ---     |
| 60056 | Mount Prospect    | 55219      | COOK    | NT STAFF | 18      | 60302 | Oak Park    | 32108      | COOK   | NT STAFF | 1       |
| 60060 | Mundelein         | 37189      | LAKE    | NT STAFF | 3       | 60304 | Oak Park    | 17231      | COOK   | NT STAFF | 1       |
| 60061 | Vernon Hills      | 25748      | LAKE    | NT STAFF | 7       | 60305 | River Fore  | 11172      | COOK   | ---      | ---     |
| 60062 | Northbrook        | 39936      | COOK    | NT STAFF | 41      | 60402 | Berwyn      | 63448      | COOK   | ---      | ---     |
| 60064 | North Chicago     | 15307      | LAKE    | NT STAFF | 1       | 60406 | Blue Island | 25460      | COOK   | ---      | ---     |
| 60067 | Palatine          | 38585      | COOK    | NT STAFF | 5       | 60409 | Calumet C   | 37186      | COOK   | ---      | ---     |
| 60068 | Park Ridge        | 37475      | COOK    | NT STAFF | 9       | 60411 | Chicago H   | 58136      | COOK   | ---      | ---     |
| 60070 | Prospect Heights  | 16001      | COOK    | NT STAFF | 3       | 60415 | Chicago Ri  | 14139      | COOK   | ---      | ---     |
| 60073 | Round Lake        | 60002      | LAKE    | NT STAFF | 1       | 60418 | Crestwood   | 22788      | COOK   | ---      | ---     |
| 60074 | Palatine          | 38985      | COOK    | NT STAFF | 5       | 60419 | Dolton      | 22788      | COOK   | ---      | ---     |
| 60076 | Skokie            | 33415      | COOK    | NT STAFF | 23      | 60422 | Flossmoor   | 9403       | COOK   | ---      | ---     |
| 60077 | Skokie            | 26825      | COOK    | NT STAFF | 13      | 60425 | Glenwood    | 9117       | COOK   | ---      | ---     |
| 60084 | Wauconda          | 16771      | LAKE    | NT STAFF | 1       | 60426 | Harvey      | 29594      | COOK   | ---      | ---     |
| 60085 | Waukegan          | 71714      | LAKE    | NT STAFF | 2       | 60428 | Markham     | 12203      | COOK   | ---      | ---     |
| 60087 | Waukegan          | 26978      | LAKE    | NT STAFF | 1       | 60429 | Hazel Cres  | 15630      | COOK   | ---      | ---     |
| 60089 | Buffalo Grove     | 41533      | LAKE    | NT STAFF | 20      | 60430 | Homewood    | 20094      | COOK   | ---      | ---     |
| 60090 | Wheeling          | 37633      | COOK    | NT STAFF | 5       | 60438 | Lansing     | 28884      | COOK   | ---      | ---     |
| 60091 | Wilmette          | 27020      | COOK    | TWP      | 51      | 60439 | Lemont      | 22919      | COOK   | ---      | ---     |
| 60093 | Winnetka          | 19570      | COOK    | TWP      | 24      | 60443 | Matteson    | 21145      | COOK   | ---      | ---     |
| 60096 | Winthrop Harbor   | 6897       | LAKE    | NT STAFF | 2       | 60445 | Midlothiar  | 26057      | COOK   | ---      | ---     |
| 60098 | Woodstock         | 32228      | MCHENRY | NT STAFF | 1       | 60452 | Oak Forest  | 27969      | COOK   | ---      | ---     |
| 60103 | Bartlett          | 41928      | DUPAGE  | ---      | ---     | 60453 | Oak Lawn    | 56855      | COOK   | ---      | ---     |
| 60104 | Bellwood          | 19038      | COOK    | ---      | ---     | 60455 | Bridgeview  | 16446      | COOK   | ---      | ---     |
| 60106 | Bensenville       | 20309      | DUPAGE  | NT STAFF | 1       | 60456 | Hometown    | 4349       | COOK   | ---      | ---     |
| 60107 | Streamwood        | 39927      | COOK    | ---      | ---     | 60457 | Hickory Hi  | 14049      | COOK   | ---      | ---     |
| 60118 | Dundee            | 15851      | KANE    | NT STAFF | 1       | 60458 | Justice     | 14428      | COOK   | ---      | ---     |
| 60120 | Elgin             | 50955      | COOK    | ---      | ---     | 60459 | Burbank     | 28929      | COOK   | ---      | ---     |
| 60126 | Elmhurst          | 48410      | LAKE    | NT STAFF | 8       | 60461 | Olympia F   | 4836       | COOK   | ---      | ---     |
| 60130 | Forest Park       | 14167      | COOK    | ---      | ---     | 60462 | Orland Par  | 38723      | COOK   | ---      | ---     |

| Zip   | City               | Population | COUNTY  | NT STAFF | # STAFF | Zip   | City            | Population | COUNTY | NT STAFF | # STAFF |
|-------|--------------------|------------|---------|----------|---------|-------|-----------------|------------|--------|----------|---------|
| 60463 | Palos Heights      | 14671      | COOK    | ---      | ---     | 60706 | Harwood Heights | 23134      | COOK   | NT STAFF | 1       |
| 60464 | Palos Park         | 9620       | COOK    | ---      | ---     | 60707 | Elmwood Park    | 42920      | COOK   | NT STAFF | 6       |
| 60465 | Palos Hills        | 17495      | COOK    | ---      | ---     | 60712 | Lincolnwood     | 12590      | COOK   | NT STAFF | 2       |
| 60466 | Park Forest        | 22115      | COOK    | ---      | ---     | 60714 | Niles           | 29931      | COOK   | NT STAFF | 8       |
| 60467 | Orland Park        | 26046      | COOK    | ---      | ---     | 60803 | Alsip           | 22285      | COOK   | ---      | ---     |
| 60469 | Posen              | 5930       | COOK    | ---      | ---     | 60804 | Cicero          | 84573      | COOK   | NT STAFF | 1       |
| 60471 | Richton Park       | 14101      | COOK    | ---      | ---     | 60805 | Evergreen       | 19852      | COOK   | ---      | ---     |
| 60472 | Robbins            | 5390       | COOK    | ---      | ---     | 60827 | Riverdale       | 27946      | COOK   | ---      | ---     |
| 60473 | South Holland      | 22439      | COOK    | ---      | ---     |       |                 |            |        |          |         |
| 60475 | Steger             | 9870       | COOK    | ---      | ---     |       |                 |            |        |          |         |
| 60476 | Thornton           | 2391       | COOK    | ---      | ---     |       |                 |            |        |          |         |
| 60477 | Tinley Park        | 38161      | COOK    | ---      | ---     |       |                 |            |        |          |         |
| 60478 | Country Club Hills | 16833      | COOK    | ---      | ---     |       |                 |            |        |          |         |
| 60480 | Willow Springs     | 5246       | COOK    | ---      | ---     |       |                 |            |        |          |         |
| 60482 | Worth              | 11063      | COOK    | ---      | ---     |       |                 |            |        |          |         |
| 60487 | Tinley Park        | 26928      | COOK    | ---      | ---     |       |                 |            |        |          |         |
| 60501 | Summit Argo        | 11626      | COOK    | NT STAFF | 2       |       |                 |            |        |          |         |
| 60513 | Brookfield         | 19047      | COOK    | NT STAFF | 1       |       |                 |            |        |          |         |
| 60515 | Downers Grove      | 27503      | DUPAGE  | NT STAFF | 1       |       |                 |            |        |          |         |
| 60525 | La Grange          | 31168      | COOK    | ---      | ---     |       |                 |            |        |          |         |
| 60526 | La Grange Park     | 13576      | COOK    | NT STAFF | 1       |       |                 |            |        |          |         |
| 60534 | Lyons              | 10649      | COOK    | ---      | ---     |       |                 |            |        |          |         |
| 60543 | Oswego             | 36156      | KENDALL | NT STAFF | 1       |       |                 |            |        |          |         |
| 60546 | Riverside          | 15668      | COOK    | ---      | ---     |       |                 |            |        |          |         |
| 60558 | Western Springs    | 12960      | COOK    | NT STAFF | 2       |       |                 |            |        |          |         |
| 60559 | Westmont           | 24852      | DUPAGE  | NT STAFF | 1       |       |                 |            |        |          |         |
| 60607 | CHICAGO            | 23897      | CHICAGO | NT STAFF | 5       |       |                 |            |        |          |         |
| 60609 | CHICAGO            | 64906      | CHICAGO | NT STAFF | 2       |       |                 |            |        |          |         |
| 60610 | CHICAGO            | 37726      | CHICAGO | NT STAFF | 1       |       |                 |            |        |          |         |
| 60613 | CHICAGO            | 48281      | CHICAGO | NT STAFF | 3       |       |                 |            |        |          |         |
| 60614 | CHICAGO            | 66617      | CHICAGO | NT STAFF | 2       |       |                 |            |        |          |         |
| 60615 | CHICAGO            | 40603      | CHICAGO | NT STAFF | 1       |       |                 |            |        |          |         |
| 60616 | CHICAGO            | 48433      | CHICAGO | NT STAFF | 1       |       |                 |            |        |          |         |
| 60618 | CHICAGO            | 92084      | CHICAGO | NT STAFF | 13      |       |                 |            |        |          |         |
| 60622 | CHICAGO            | 52548      | CHICAGO | NT STAFF | 3       |       |                 |            |        |          |         |
| 60625 | CHICAGO            | 79243      | CHICAGO | NT STAFF | 16      |       |                 |            |        |          |         |
| 60626 | CHICAGO            | 50139      | CHICAGO | NT STAFF | 10      |       |                 |            |        |          |         |
| 60629 | CHICAGO            | 113916     | CHICAGO | NT STAFF | 2       |       |                 |            |        |          |         |
| 60630 | CHICAGO            | 57344      | CHICAGO | NT STAFF | 10      |       |                 |            |        |          |         |
| 60631 | CHICAGO            | 28641      | CHICAGO | NT STAFF | 3       |       |                 |            |        |          |         |
| 60632 | CHICAGO            | 91326      | CHICAGO | NT STAFF | 1       |       |                 |            |        |          |         |
| 60634 | CHICAGO            | 74298      | CHICAGO | NT STAFF | 2       |       |                 |            |        |          |         |
| 60639 | CHICAGO            | 90517      | CHICAGO | NT STAFF | 5       |       |                 |            |        |          |         |
| 60640 | CHICAGO            | 65790      | CHICAGO | NT STAFF | 19      |       |                 |            |        |          |         |
| 60641 | CHICAGO            | 71663      | CHICAGO | NT STAFF | 2       |       |                 |            |        |          |         |
| 60642 | CHICAGO            | 18480      | CHICAGO | NT STAFF | 1       |       |                 |            |        |          |         |
| 60643 | CHICAGO            | 49952      | CHICAGO | NT STAFF | 1       |       |                 |            |        |          |         |
| 60645 | CHICAGO            | 45274      | CHICAGO | NT STAFF | 5       |       |                 |            |        |          |         |
| 60646 | CHICAGO            | 27177      | CHICAGO | NT STAFF | 7       |       |                 |            |        |          |         |
| 60647 | CHICAGO            | 87291      | CHICAGO | NT STAFF | 2       |       |                 |            |        |          |         |
| 60654 | CHICAGO            | 14875      | CHICAGO | NT STAFF | 2       |       |                 |            |        |          |         |
| 60655 | CHICAGO            | 28550      | CHICAGO | NT STAFF | 1       |       |                 |            |        |          |         |
| 60656 | CHICAGO            | 27613      | CHICAGO | NT STAFF | 2       |       |                 |            |        |          |         |
| 60657 | CHICAGO            | 65996      | CHICAGO | NT STAFF | 5       |       |                 |            |        |          |         |
| 60659 | CHICAGO            | 38104      | CHICAGO | NT STAFF | 3       |       |                 |            |        |          |         |
| 60660 | CHICAGO            | 42752      | CHICAGO | NT STAFF | 5       |       |                 |            |        |          |         |

## Appendix VIII - Reopening Ladder

# New Trier Township High School Reopening Ladder



### MOVEMENT BETWEEN STEPS

The Reopening Advisory Board, which includes the Board, Faculty, Parent, Student, and Medical Representation, will make recommendations to the Superintendent informed by the Operational Evaluation categories established in the reopening plan.