



Reopening Advisory Board

September 9, 2020




Agenda

1. Introduction of epidemiologists
2. Discussion of questions with medical professionals
3. Ladder Review
4. Reopening Advisory Board Review Calendar
5. COVID-19 Case Numbers to Date
6. Metric and Threshold Review
7. Next Meeting



Introduction of Epidemiologists

- Dr. Alicia Siston
- Dr. Nallely Mora



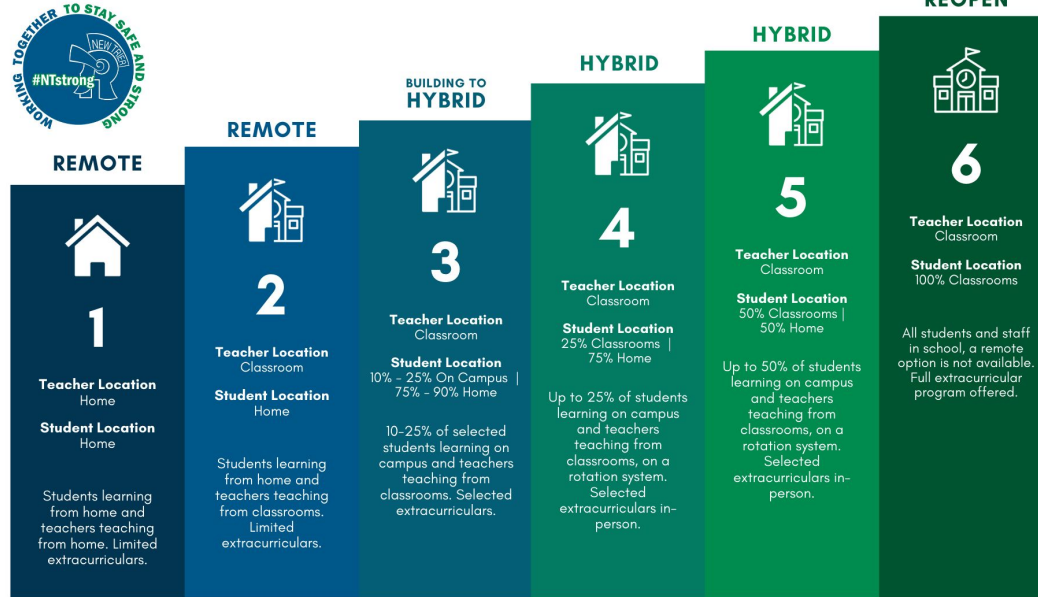
Discussions of Questions with Medical Professionals

Topics

- General Data/Metrics
- Mental Health
- Catchment Areas
- Building Density/Operations and Metrics
- PPE and Facilities
- Community Impact
- Integrating NTHS Specific Data
- External Behavior Modification

Ladder Review

New Trier Township High School Reopening Ladder



MOVEMENT BETWEEN STEPS

The Reopening Advisory Board, which includes the Board, Faculty, Parent, Student, and Medical Representation, will make recommendations to the Superintendent informed by the Operational Evaluation categories established in the reopening plan.

Draft Metrics

Appendix I: New Trier's Proposed Metrics and Threshold Chart

Step	New Cases/100K Twp Zip Codes	New Cases/100K NT Staff Region (unweighted)	Positivity Rate Twp Zip Codes	Positivity Rate NT Staff Region (unweighted)	Operational Metrics ¹
Current Metrics²					
Metrics as of week ending 9/8/2020	9.4 daily 66.0 weekly	13.5 daily 94.2 weekly	3.9%	4.0%	Operational metrics ready to go for Step 3
Thresholds					
1 & 2 – Remote - Essential staff in school; teachers situation dependent	> 14 daily > 98 weekly	> 25 daily > 175 weekly	> 5%	> 8%	All students remote. Status of staff in the building is TBD.
3 – Cohorts - Specialized Populations in designated areas	10 to 14 daily 70 to 98 weekly	14 to 25 daily 98 to 175 weekly	<= 5%	<= 8%	No concerns at this time. Must have green light on operational metrics for Step 3 capacity and student movement
4 – 25% Hybrid 25% of students following their schedules (approx. 6-7 per classroom)	7 to 10 daily 49 to 70 weekly	7 to 14 daily 49 to 98 weekly			No concerns at this time. Must have green light on operational metrics for Step 4 capacity and student movement after monitoring Step 3.
5 – 50% Hybrid 50% of students following their schedules (approx. 12-14 per classroom)	TBD	TBD	TBD	TBD	Significant areas of concern: lunch, hallways, free periods, bathrooms. Need time in Step 4 to assess.
6 – All In-school	Restore Illinois Phase 5				

Data: <https://www.dph.illinois.gov/covid19/covid19-statistics>, Zip Code Data

¹ Operational metrics defined and monitored separately

² All metrics are rolling 7-Day averages

Reopening Advisory Board Calendar

Tentative Reopening Schedule

Week and Step	RAB Meeting and Supt/ Board Decision Date	Academic Program on Campus (bold indicates new programs)	Extracurricular Program
9/7 Step 2/3	9/9 - RAB Meeting 9/11 - Supt./Board decision for week of 9/21	All Remote	Athletic - Fall Sports and Contact Days Performing Arts/Student Activities - Selected
9/14 Step 2/3	9/16 - RAB Meeting 9/18 - Supt./Board decision for week of 9/28	ELS, Transition, Learning Strategies (tentative)	Athletic - Fall Sports and Contact Days Performing Arts/Student Activities - Selected
9/21 Step 3 (?)	9/23 RAB Meeting 9/25 Supt./Board decision for week of 10/5	ELS, Transition, Learning Strategies, ELL, NTLC	Athletic - Fall Sports and Contact Days Performing Arts/Student Activities - Selected
9/28 Step 3 (?)	9/30 RAB Meeting 10/2 Supt./Board decision for week of 10/12	ELS, Transition, Learning Strategies, ELL, NTLC, Resource	Athletic - Fall Sports and Contact Days Performing Arts/Student Activities - Selected
10/5 Step 4 (?)	10/7 RAB Meeting 10/9 Supt./Board decision for week of 10/19	ELS, Transition, Learning Strategies, ELL, NTLC, Resource, 25% of students by alpha	Athletic - Fall Sports and Contact Days Performing Arts/Student Activities - Selected



COVID-19 Case Numbers to Date

Charts produced from <http://covid-dashboard.fsm.northwestern.edu/>

COVID-19 Case Numbers to Date

New Trier District 203 - COVID-19 Case Summary - Week of 8/31						
COVID-19 Tracking - Northfield				COVID-19 Tracking - Winnetka		
Group	Cases	Quarantined		Group	Cases	Quarantined
Students		2		Students		8
Faculty				Faculty		2
Staff	1	2		Staff	1	1
Admin				Admin		
Total	1	4		Total	1	11

Based on cases reported to the District and/or provided to the District by the Cook County Department of Public Health

Includes quarantine for any reason, including exposure to someone who is positive, travel to an area with high incidence, etc

Metric and Threshold Review

- New Cases per 100,000

IDPH/Adaptive Pause

Substantial Community Transmission	<ul style="list-style-type: none">• >14 average new cases per day over last 7 days• >100 new cases per week	Strongly consider a pivot to various arrays of remote learning
Moderate Community Transmission	<ul style="list-style-type: none">• Between 7 and 14 average new cases per day over last 7 days• Between 50 and 100 new cases per week	Implement significant mitigation strategies, remote learning option for families, consider other remote learning options
Minimal Community Transmission	<ul style="list-style-type: none">• < 7 average new cases per day over last 7 days• <50 new cases per week	Stay prepared for movement into moderate and substantial transmission levels

Metric and Threshold Review

- New Cases per 100,000

Harvard Global Health Institute

Red	<ul style="list-style-type: none">• >25 avg new cases per day over last 7 days• >175 new cases per week	<ul style="list-style-type: none">• Remote Learning
Orange	<ul style="list-style-type: none">• Between 10 and 25 avg new cases per day over last 7 days• Between 70 and 175 new cases per week	<ul style="list-style-type: none">• Priority on K-8: can be in-person to the extent spaces can be “pandemic resilient”• 9-12 remote with K-8 being priority; silent on School Districts that serve only grades 9-12
Yellow	<ul style="list-style-type: none">• Between 1 and 10 avg new cases per day over last 7 days• Between 7 and 70 new cases per week	<ul style="list-style-type: none">• Priority on K-8• 9-12 Hybrid to the extent spaces can be “pandemic resilient”
Green	<ul style="list-style-type: none">• < 1 avg new case per day over last 7 days• <7 new cases per week	All schools open

New Cases per 100,000 - Ladder to Reopening

New Trier Ladder to Reopening - Considerations

Step	Township Zip Codes	New Trier Staff Zip Codes
1 & 2 - Remote	> 14 new cases (IDPH)	> 25 daily (Harvard)
3 - Cohorts	10 to 14 daily (IDPH + Harvard)	14 to 25 (IDPH + Harvard)
4 - 25% Hybrid	7 to 10 daily (IDPH + Harvard)	7 to 14 (IDPH)
5 - 50% Hybrid	TBD	
6 - All in-school	Restore Illinois Phase 5 or Other ISBE Guidance	

Should New Trier Staff Zip Code calculations be a weighted average by number of staff?

Positivity Rates - Ladder to Reopening

New Trier Ladder to Reopening - Considerations

Step	Township Zip Codes	New Trier Staff Zip Codes
1 & 2 - Remote	> 5%	>8%
3 - Cohorts	<=5%	<=8%
4 - 25% Hybrid	<=5%	<=8%
5 - 50% Hybrid	TBD	
6 - All in-school	Restore Illinois Phase 5 or Other ISBE Guidance	

Should New Trier Staff Zip Code calculations be a weighted average by number of staff?



Next Steps

- Discussions with members of the Board of Education based on the RAB discussions and input
- Posting of metrics, thresholds, and official step on the Ladder to Reopening on Friday Sept 11



Next Meeting

- September 16
- Questions for our medical professionals
- Focus on Operational Metrics



Questions