



## ***Student Drop off - Northfield Campus***

For the safety of our students and those who transport them, a detailed plan for student drop-off has been implemented. It is essential that all of us strictly adhere to the guidelines in this letter. Attached you will find a map of the outside areas of the school including the parking lots, the bus loading zones, and the automobile and carpool drop-off areas. Additionally, the locations of the bicycle racks are noted on the map on the reverse side of this letter.

### **ALLTOWN BUS SERVICE DROP-OFF POINT**

Students subscribing to the Alltown Bus Service will be dropped off on the east side of Building C next to the sidewalk as marked by **Route Bus Drop Off** on the map. All school buses will enter the Campus from Frontage Road and proceed down the access road to the bus lane. This location is for **BUSES ONLY** and **NO AUTOMOBILES OR CARPOOLS WILL BE ALLOWED TO ENTER THE CAMPUS FROM FRONTAGE ROAD.**

### **PACE TRANSIT SYSTEM DROP-OFF POINTS**

Four PACE routes will be servicing Northfield Campus students. The drop-off points for PACE will be on Happ Road directly in front of the main entrance to the Campus. Northbound buses will stop on the east side of Happ Road and southbound buses will stop on the west side as marked by **Pace Bus Stops** on the map. All students must use the crosswalk in crossing the street from the west side of Happ Road.

### **SHUTTLE BUS DROP-OFF AND PICK-UP AREA**

Students who will commute to the Winnetka Campus for classes or after-school activities – including athletics – will board and depart from the shuttle bus at the **Activity Bus Drop Off & Pick Up** location. A shuttle bus schedule was included in the transportation mailing.

### **AUTOMOBILE AND CARPOOL TRAFFIC**

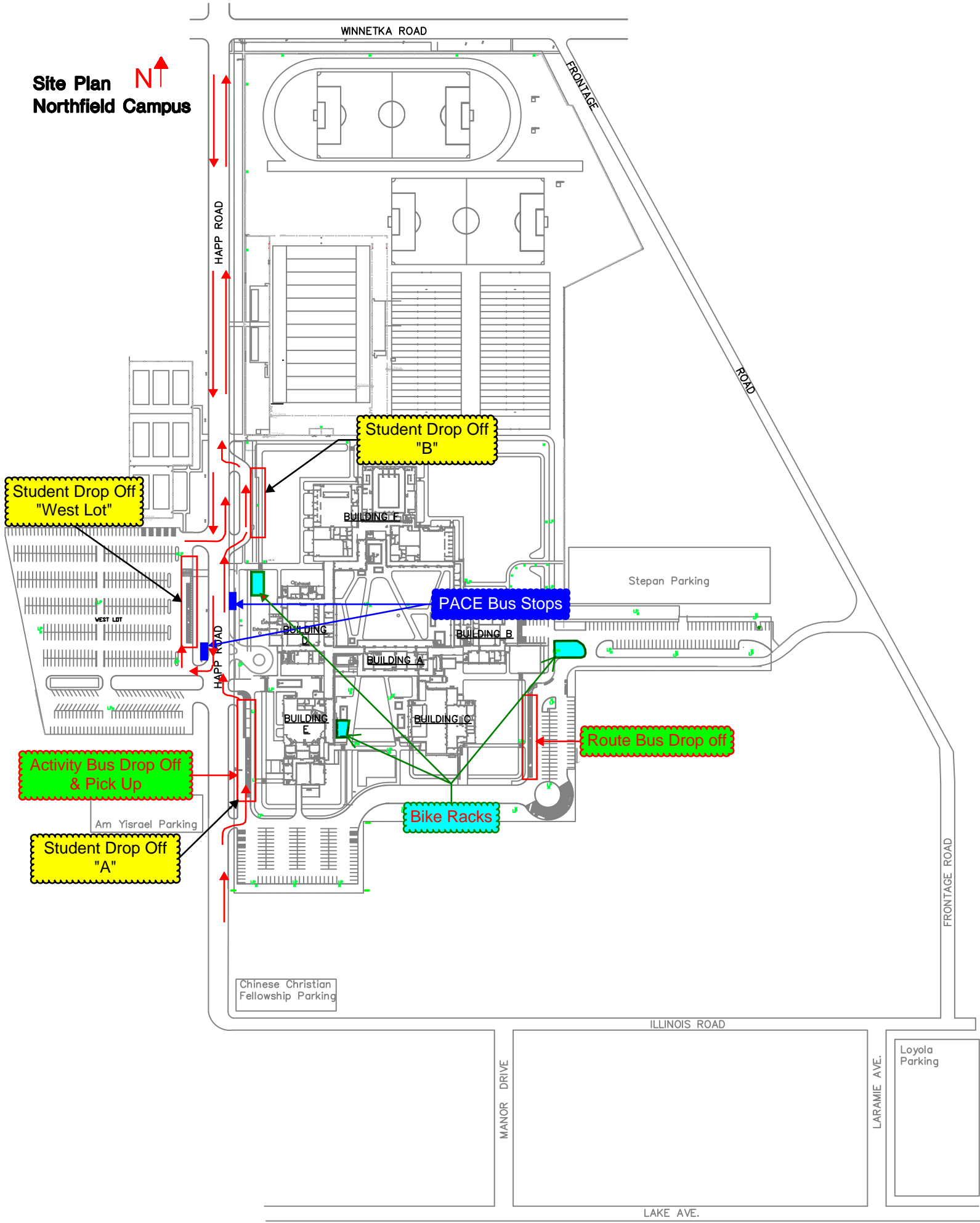
Students who use automobiles or carpools to get to the campus must use one of three student drop-off locations on Happ Road. Northbound vehicles may use **Student Drop Off “A”** or **“B”** on your attached map. Care must be taken in accessing these locations and re-entering the flow of traffic on Happ Road. Southbound vehicles can use **Student Drop Off “B”** on the east side of Happ Road or the **“West Lot”** on the west side of Happ Road. The entrance to the west lot is on the south side. After the drop-off is made, vehicles will proceed to the north end of the lot to exit. Please note the striping that is in each location to indicate the area that the drop-off is to occur. The D Circle may only be used for students with mobility issues (e.g. a student on crutches). **Under no circumstances is student drop-off to be done in the South lot, the Southeast lot, the East lot, or the turnaround for special needs students on Happ Road. Carpool traffic cannot use Frontage Road as an entry to the campus to drop off students.**

### **BICYCLE TRAFFIC**

For students preferring to use bicycles, three locations have been chosen for bike racks on the Campus. All locations are convenient to the buildings and are surveyed by cameras. Students riding bicycles must be sure that they lock their bikes to the racks. Bicycle safety to and from school on the access roads leading to the Campus is of utmost importance.

Thank you in advance for cooperating with us to maintain the safety and well-being of our students and those who transport them to the Northfield Campus.

Site Plan **NT**  
Northfield Campus



Student Drop Off  
"West Lot"

Student Drop Off  
"B"

PACE Bus Stops

Route Bus Drop off

Activity Bus Drop Off  
& Pick Up

Bike Racks

Student Drop Off  
"A"

BUILDING E

BUILDING D

BUILDING B

BUILDING A

BUILDING E

BUILDING C

Stepan Parking

Am Yisrael Parking

Chinese Christian Fellowship Parking

Loyola Parking

WINNETKA ROAD

FRONTAGE ROAD

HAPP ROAD

HAPP ROAD

ILLINOIS ROAD

MANOR DRIVE

LARAMIE AVE.

LAKE AVE.

FRONTAGE ROAD